

- ◆ Heavy-duty 5000 lb Capacity System
- ◆ Auto Load Height Detection Photo-Eye
- ◆ Panasonic PLC with Mid Cycle Control and Wide Selection of Wrap Patterns
- ◆ Accu-Count Exact Turntable Positioning System
- ◆ Super Rapid Thread Pre-Stretch Film Carriage
- ◆ Rugged Surround Deck included in Low Profile Model

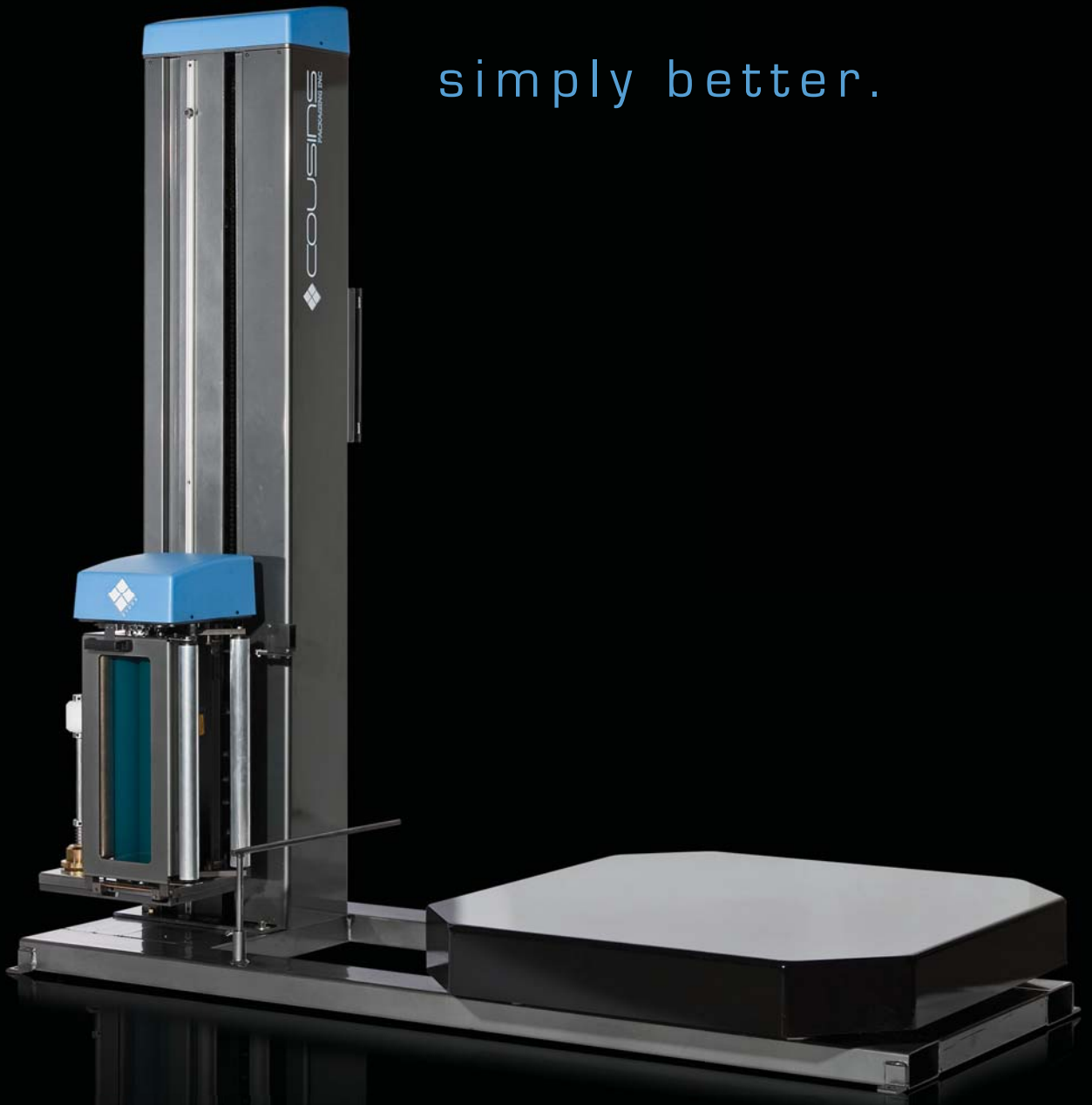
simply better.



LP 2100X

The 2100X Series  
Tried, Tested and Tough

simply better.



HP 2100X

## Cousins Simply Better

At Cousins Packaging, we have built a strong reputation for value-added quality, innovation and affordability. Our advanced product line of precision-engineered, heavy duty stretch wrap machinery, ranging from semi-automatics to technically advanced, customized, automated systems, offers vast benefits in terms of savings, productivity and safety. Every Cousins machine has been designed to supply reliable performance and minimized maintenance in virtually any packaging environment.

At Cousins, we are extremely proud of the high quality machinery we produce and the real value we provide to our customers. Our in-depth understanding of the practical concerns of your stretch wrap needs supports our commitment to bringing the latest technology and features to the marketplace. Cousins Packaging offers you the best combination of affordable initial investment and after installation performance on the market today.

Neil Cousins, President

### The 2100X Series Tried, Tested and Tough!

- Heavy-duty **5000 lb Capacity** system with massive 10" structural steel **H beam** tower construction
- **Panasonic** PLC with mid cycle control and wide selection of wrap patterns Standard
- Accu-Count Exact turntable positioning system Standard
- Super Rapid Thread Carriage with patent pending pressure balance nip roller system Standard
- Rugged Surround Deck included Standard on Low Profile Model!
- Auto load height detection photo-eye Standard
- Innovative operator safety features Standard:
  - Carriage descent obstruction emergency shut off system
  - Carriage door electrical safety interlock
  - Carriage elevator Anti-Fall device
  - Carriage lift and turntable drives designed inside the tower

### Simply Better

Because we understand your needs

- Simple and uncomplicated operator controls for quick adjustment to maximize Machine capabilities
- Simple and uncomplicated Machine designs, for a smooth and long operating life
- Carefully designed to be compact without compromising load sizes. This results in less shipping costs, increased portability and takes up less warehouse space
- Simply bringing you the most advanced performance enhancing technologies like our exclusive A-Arm and Super Rapid Thread Carriage – significantly impacting your productivity, safety and bottom line

## The 2100X Series

### Features:

#### Power Requirement

Energy efficient 115V / 1 Ph / 60 Hz / 15A  
dedicated service

#### Maximum Load Size

- Low Profile:
- 50" W x 50" L x 87" H
  - 71" maximum load diagonal
- High Profile:
- 56" W x 56" L x 80" H
  - 79" maximum load diagonal

#### Maximum Load Weight

5,000 lb dynamic / 10,000 lb static

#### Turntable & Base

Accu-Count exact turntable positioning system saves film and money by automatically sensing starting position, applying exact wrap counts and realigning back to the optimal starting position.

On High Profile versions the turntable can be rotated to any desired starting position to allow loading from any angle.

- Front and back forklift ports
- Rugged surround deck for 3 position loading  
Standard on Low Profile model
- Maintenance free 36-point Roller Bearing (Low Profile) or 4-point Caster (High Profile) Turntable Support System

#### Turntable Specs:

- Low Profile:
- 57" diameter 3/8" Thick Laser-cut Steel Plate
- High Profile:
- 48" Octagonal 5/16" Thick Formed Steel Plate

#### Turntable Height:

- Low Profile:
- 2.937" from floor
- High Profile:
- 11" from floor

#### Turntable Drive

- 3 to 12 RPM rotational speed
- 1/2 HP DC variable speed drive motor
- Electronic soft start acceleration
- Turntable drive self-adjusting chain tensioner  
Standard on Low Profile
- ANSI #50 direct drive chain

#### Tower Construction

Nearly indestructible 10" structural steel **H beam** tower protects carriage lift drive pocketed inside the tower and provides the rigidity the carriage requires for decades of service. Turntable drive protected inside tower on Low Profile and under Turntable on High Profile model.

#### Carriage Elevator

- 1/2 HP DC variable speed motor
- Chain Lift with carriage Anti-Fall device
- 12 - bearing, maintenance-free carriage tracking system

#### Film Delivery System

- Super Rapid Thread pre-stretch film carriage with patent pending pressure balance nip roller system
- Standard 20" W x 10" Diameter roll (max)

#### Simple to Operate Controls

- **Panasonic** PLC Standard
- 1 - 9 top and base wrap selector Standard
- Base or top wraps first program
- Separate raise and lower speed controls
- Cycle pause for top sheet
- Reinforce wrap for mid wraps
- Up only or up/down program
- 100% accurate wrap count with positive turntable alignment

### Special Features

- Carriage descent obstruction emergency shut off system
- Electric safety interlock carriage door device
- Carriage elevator Anti-Fall device
- Auto load height detection photo-eye
- Electro static powder coating for tough long-lasting finish
- Carriage lift drive pocketed inside the tower  
Turntable drive protected inside tower on Low Profile and under Turntable on High Profile model

### Non-proprietary Parts

- Utilizes non-proprietary UL/CSA approved parts
- Nationwide network of highly trained distributors and service technicians always ready to provide fast, friendly and efficient response

### Ramp

Optional loading ramp 60" long by 48" wide complete with 10" level porch area available

### Warranty

"Built Strong, Built to Last" 5 and 3 Warranty

### Shipping Weight (estimated)

Low Profile: • 1900 lb

High Profile: • 1600 lb



Panasonic PLC Standard



Super Rapid Thread pre-stretch carriage with patent pending pressure balanced nip roller system gives you greater film to pre-stretch roller contact with balanced nip roller pressure



Tried, Tested and Tough  
[www.cousinpackaging.com](http://www.cousinpackaging.com)



**COUSINS Packaging Inc.**

105 Claireport Crescent

Etobicoke, Ontario

Canada M9W 6P7

416 743 1341

1 888 209 4344

fax 416 743 1831

[www.cousinspackaging.com](http://www.cousinspackaging.com)

Distributed by:



Printed in Canada. Specifications subject to change without notice (E.O.&E.)

11/09